



Rumble Tuff®

Serene Express

Electric Breast Pump Duo
Instructions & Assembly



Model: PA203D-WIC

Congratulations on your new Rumble Tuff® Serene Express! The Rumble Tuff® Serene Express is perfect for many occasions.

- Collecting breast milk while you're away from your baby
 - for example: when you're at work
- Relieving engorgement
 - for example: when your baby's feeding habits change because they're eating more solids
- Maintaining your milk supply if you have to temporarily stop breastfeeding
 - for example: to express unsuitable milk while you are undergoing medical treatment

The Rumble Tuff® Serene Express provides many of the features busy moms love.

- 3 cycles of expressions to mimic baby's nursing patterns.
 - Reflex Expression - Latch on & Rooting habit
 - Swift Expression - Fast but shallow swallowing habit
 - Natural Expression - Steady and strong swallowing pattern
- Milk back-flow protection
- Quiet motor for discretion
- Small and lightweight
- 2 power options to fit your needs
 - AC/DC Adapter (included)
 - Replaceable AA Alkaline Batteries
- Convert to Manual Pump in seconds (parts included)

Indication for Use

The Rumble Tuff® Serene Express Electric Breast Pump Duo is designed to express milk from the breasts of lactating women. It is intended for multiple users if the collection kits are not shared.

Table of Contents

Congratulations	1
Important Safeguards	4
Danger	4
Caution	4
Warning	5
Accessories and Parts	6
Bottle Assembly	7
Expression Collection Combo Kit (HF)	7
How to Assemble the Expression Collection Combo Kit (HF)	8
Expression Collection Combo Kit	12
How to Assemble the Expression Collection Combo Kit	13
Cleaning Instructions	16
About Your Rumble Tuff Serene Express	18
Electric Breast Pump Main Unit	18
LCD Screen Guide	18
How to Use Your Rumble Tuff Serene Express	19
Suction Level	21
M Button (My Favorite Pattern)	22
How to Adjust the Clock	23
How to Adjust the Alarm	24
Power Options	26
Breastmilk Storage Guidelines	28

Rumble Tuff Manual Pump Assembly	30
How to Assemble the Manual-Pump Diaphragm Kit	30
How to Assemble the Expression Collection Combo Kit	31
Using your Rumble Tuff Manual Pump	32
Expression Collection Combo Kit	33
Troubleshooting	34
Interruption of Electrical Service	34
Radio Frequency Energy	34
Decreased Suction	34
No response Operating Adjusting Knob and Mode Button	35
Pump Doesn't Run When Power is "On"	35
Breast Milk Buildup in the Breastshield Body	35
Where to get Replacement Parts.....	35
Where to Purchase Additional Accessories	35
Pumping Tips	36
Warranty	37
Technical Data	38

Important Safeguards

The Rumble Tuff® Serene Express Electric Breast Pump Duo is designed to express milk from lactating women. It is intended for multiple users if the collection kits are not shared.

READ ALL INSTRUCTIONS BEFORE USING

DANGER:

To reduce the risk of electrocution:

- Always unplug this product immediately after using.
- Do not use while bathing.
- Do not place or store this product where it can fall or be pulled into a tub or sink.
- Do not place or drop into water or other liquid.
- Do not reach for an electrical product that has fallen into water. Unplug immediately.
- Do not allow children or pets to play with motor unit or the accessories, as these parts may pose a choking or strangulation hazard.

CAUTION:

- Do not use this product for any other purpose than as indicated in this manual.
- Make sure all of the parts are assembled correctly before operating.
- Stop using the breast pump immediately if your breasts or nipple experience pain or discomfort.
- Please wash hands before using this product.
- Keep this product out of reach of babies and children.
- Do not drop or hit the product with bare hands right after sterilizing by boiling water to avoid scalds and burns.
- Do not over-boil to avoid premature aging of the product materials.
- Do not use any accessories, parts, or attachments that are not recommended by Rumble Tuff. Doing so may void the warranty.
- Do not connect the pump or any of its accessories to any equipment not recommended by Rumble Tuff.
- Do not store the product in a dusty, moist environment, neither being exposed to light.

WARNING:

- This product should never be left unattended while plugged in.
- Close supervision is necessary when this product is used near children or invalids.
- Use this product only for its intended use as described in this manual. Do not use attachments not recommended by Rumble Tuff.
- Do not operate this product if it has a damaged cord or plug, if it is not working properly, if it has been dropped or damaged, or if it has been dropped in water.
- Keep the cord away from heated surfaces.
- Do not use while sleeping or drowsy.
- Do not drop or insert any other object into any opening or tubing.
- Do not operate outdoors with the AC/DC Adapter, where aerosol spray products are being used, or where oxygen is being administered.
- Make sure the voltage of the AC/DC Adapter is compatible with the power source.
- Plug the AC/DC Adapter into the electrical outlet first, then plug the power cord into your Rumble Tuff Double Electric Breast Pump.
- Rumble Tuff has provided an AC/DC Adapter with this device. Using any other AC/DC Adapter not approved by the manufacturer will void the warranty.
- If you are infected with Hepatitis A, Hepatitis B, or have HIV (Human Immunodeficiency Virus) pumping breast milk does not reduce or remove the risk of transmitting the virus to your baby through breast milk.
- Wash the Expression Collection Combo Kit parts before each use.
- Do not operate a motor vehicle while using the Rumble Tuff Electric Breast Pump.
- Do not attempt to modify the product.

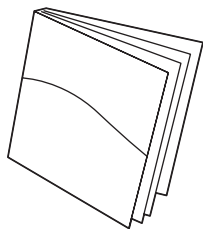
Note:

When disposing of the pump or its accessories, please consult with your local authorities for the proper method of disposal of potentially bio-hazardous parts and accessories, or to learn if there are any other regulations.

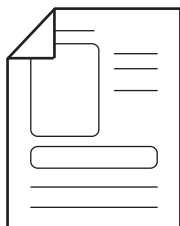
SAVE THESE INSTRUCTIONS
along with your receipt for future reference.

Accessories and Parts

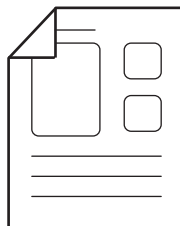
Included Parts and Accessories



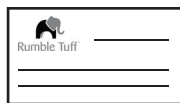
User Manual



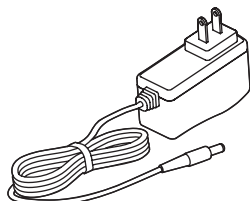
Assembly Guide



Cleaning
Instructions

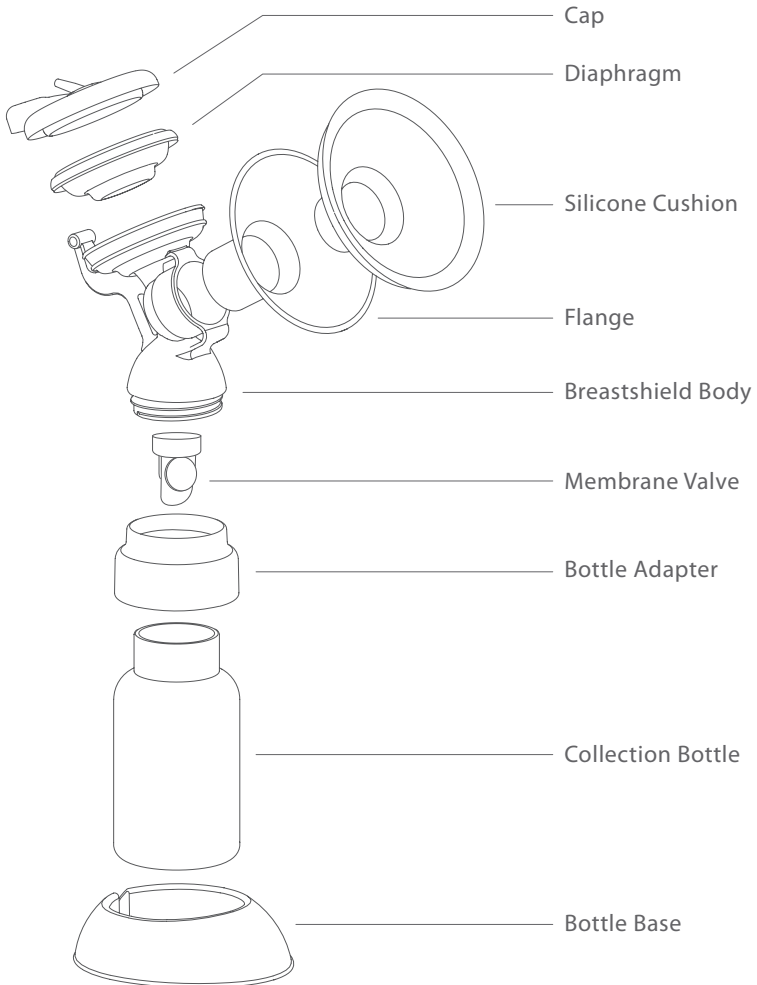


Welcome/
Registration Card



12V AC/DC Power
Adapter

Expression Collection Combo Kit (HF)



Bottle Assembly

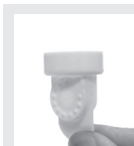
How to Assemble the Expression Collection Combo Kit (HF)



Hold the Breastshield Body in one hand and make sure the bottle-thread side opening is facing up.



Insert the Membrane Valve into the bottom of the Breastshield Body.

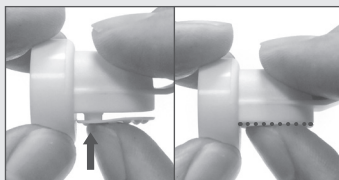


Verify that the membrane of the Membrane Valve is flat. A curled membrane will result in suction loss.

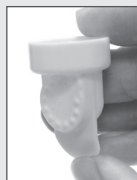
How to Assemble the Membrane Valve:



Hold the Silicone Membrane and insert the small stem into the top-right opening of the Valve.



Press hard on the Membrane to ensure that the stem is completely inserted and is snug against the Valve opening.

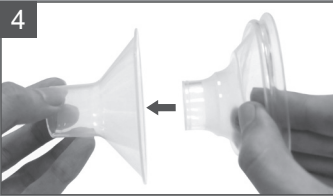


Membrane Valve Assembly completed.



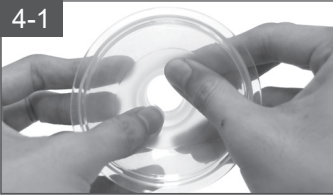
Confirm that the Membrane Valve is securely installed.

How to Assemble the Expression Collection Combo Kit (HF)



If desired, place the Silicone Cushion into the Flange of the Breastshield.

Note: Your Electric Breast Pump will work with or without the Silicone Cushion. Your comfort depends on your preference.



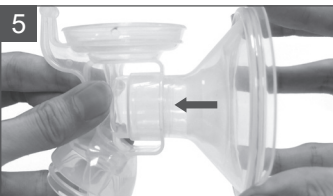
Push the center of the Silicone Cushion into the Flange.



Secure the lip of the Cushion around the edge of the Flange.



Ensure that the lip of the Cushion is securely in place.



Insert the Flange into the Breastshield Body.

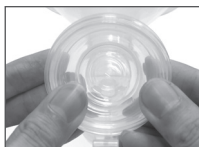
Bottle Assembly

How to Assemble the Expression Collection Combo Kit (HF)



Place the Diaphragm in the Cup of the Breastshield Body.

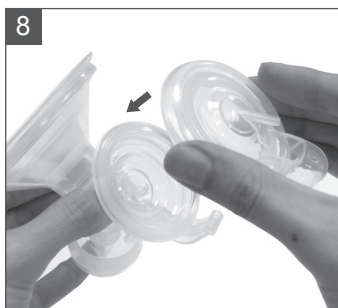
! **Note:** Do not reverse the order of steps 6 through 9. Doing so will result in suction loss when pumping.



Press around the edges of the Diaphragm for a secure fit.



Ensure that the Diaphragm is securely mounted in place. This is crucial in order to achieve proper suction and prevent milk backflow.



Place the Cap on the Cup and Diaphragm.

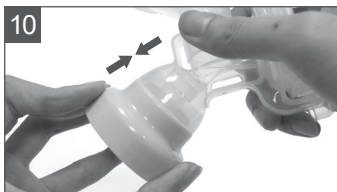


Align the hinge cover over the hinge. Press tightly on the cap to seal.



The Electric Diaphragm Kit is assembled.

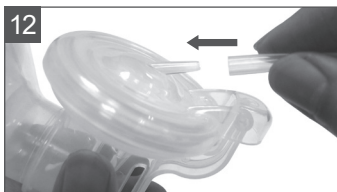
How to Assemble the Expression Collection Combo Kit (HF)



Twist the Bottle Adapter onto the Breastshield Body.



Twist on the Collection Bottle for a secure fit.



Connect the Tubing to the Tubing Connector located on the Cap.

Note: Make sure there is no moisture in the Tubing.



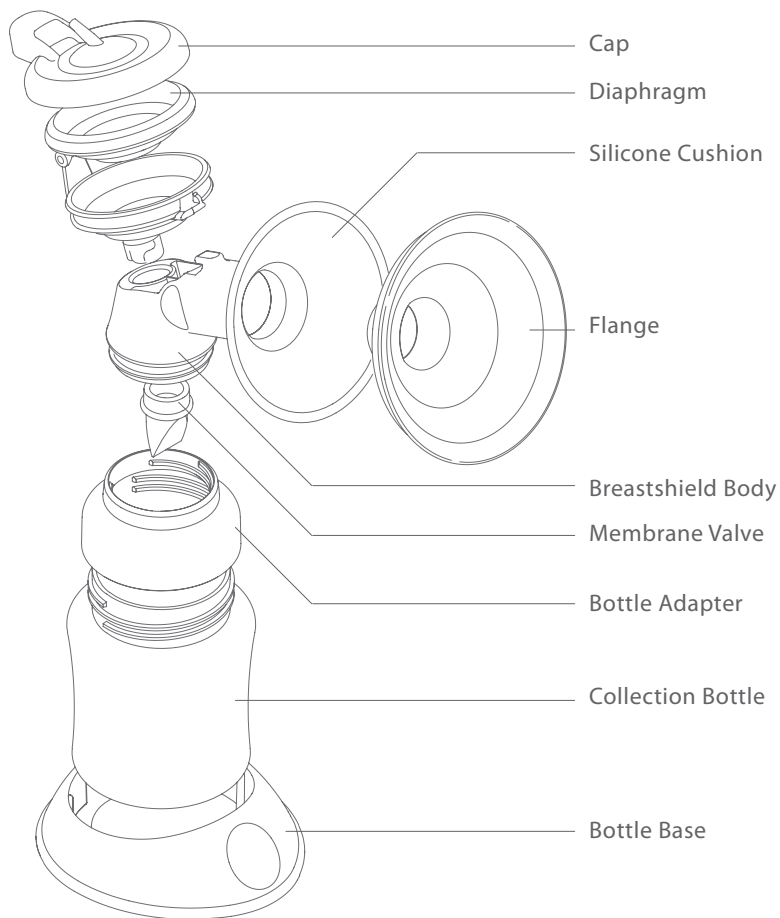
Push firmly together for a tight seal.



The Expression Collection Combo Kit is assembled.

Bottle Assembly

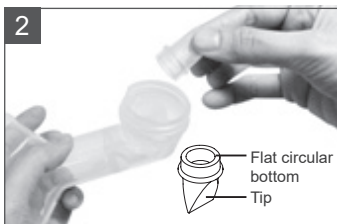
Expression Collection Combo Kit



How to Assemble the Expression Collection Combo Kit



Hold the horn of the Breastshield Body in one hand. Make sure the bottle-thread side opening is facing up.



With the thumb and forefinger of the other hand, hold the tip of the One-Way Valve and place the flat circular bottom into the opening. Be sure not to stretch, bend, or twist the tip of the One-Way Valve. Seal all the edges of the flat circular bottom firmly.

Note: The One-Way Valve tip does not have to align with anything, as long as all the edges are securely sealed.



With your thumb and forefinger, gently smooth closed any openings on the tip of the One-Way Valve and shape into a straight line.

Note: This is critical to the performance of the pump.

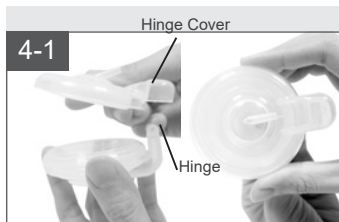


How to Assemble the Electric Pump Diaphragm Kit

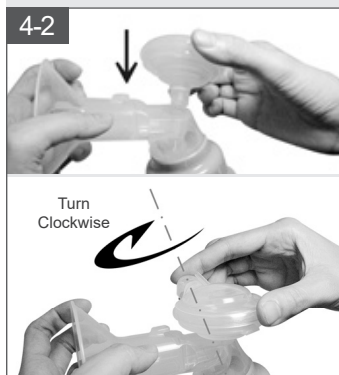


With the Cup in one hand, place the Silicone Diaphragm in the Cup (matching the shape of the Cup). Press around the edges of the Diaphragm for a secure fit. Make sure the Diaphragm is evenly mounted on the Cup and there is no gap in between them.

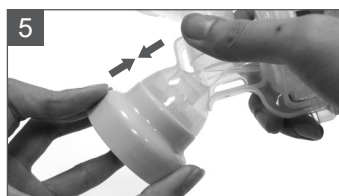
Bottle Assembly



Place the Cap on the Cup and Diaphragm. (Be sure to align the hinge and hinge cover.) Press tightly to seal.



With the O-ring side down, put the Electric Pump Diaphragm Kit onto the top of the Breastshield Body opening. Twist the Electric Pump Diaphragm Kit clockwise onto the Breastshield Body opening. Twist the Electric Pump Diaphragm Kit clockwise onto the Breastshield Body until it locks into place. Turn to page 14 to continue the Expression Collection Kit assembly.

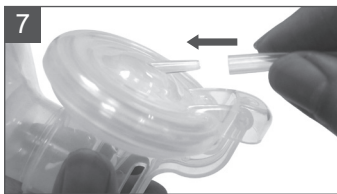


Twist the Bottle Adapter onto the Breastshield Body.



Twist on the Collection Bottle for a secure fit.

How to Assemble the Expression Collection Combo Kit



Connect the Tubing to the Tubing Connector located on the Cap.

Note: Make sure there is no moisture in the Tubing.



Push firmly together for a tight seal.



The Expression Collection Combo Kit is assembled.

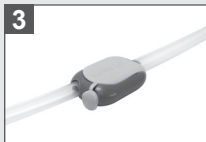
To Convert Your Double Pump Into a Single Pump: Remove one tube and close the cap.



1 Disconnect the tube from the Tubing Splitter on the side with the little Cap.



2 Cap the opening of the Tubing Splitter



3 Ready to use as a single pump.

Note: Using the pump after converting from Single to Double or Double to Single may result in a temporary lack of suction or over-suction respectively. Please use caution and adjust the pump to your comfortable and effective level.



To view the Assembly Guide video, please visit Rumble Tuff online at <https://www.rumbletuff.com/troubleshooting> or scan this QR Code with your smartphone or tablet.

Cleaning Instructions

Sanitize Prior to First Use:

Before you use your Rumble Tuff® Electric Breast Pump for the first time, disassemble and boil all parts of the Expression Collection Combo Kit in water for 10 minutes.

- Be sure to use enough water to keep all parts afloat while boiling.
- **DO NOT boil Tubing or Tubing Adapter.**
- Remove all parts from the water immediately after sterilizing. To avoid scalds and burns, do NOT touch the product with bare hands right after sterilizing.
- Completely air-dry or towel-dry the parts before reassembling.

Partially dry components may affect the performance of your Electric Breast Pump. Please ensure that all parts are completely dry before use.

Before Each Use:

- Wash your hands thoroughly with soap and warm water before handling the Expression Collection Combo Kit, the Electric Breast Pump, or any Expression Collection parts or attachments.
- Make sure all parts are clean and dry.
- Ensure the Tubing is free from any liquid. **DO NOT operate your Rumble Tuff Electric Breast Pump Duo if any liquid is visible in the Tubing.**

Note:

Before each use, visually inspect each individual component for cracks, chips, tears, discoloration, or deterioration, as they may affect the efficiency of the Rumble Tuff® Electric Breast Pump. In the event that damage to the device is observed, please discontinue use until the parts have been replaced.

General Cleaning Instructions:



Caution: Please use extra caution when cleaning the One-Way Valve and Membrane Valve. If either gets damaged, your breast pump will not function properly.



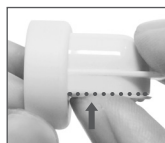
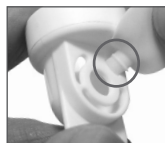
Special Cleaning Instruction for the One-Way Valve:

To clean the One-Way Valve, rub it gently between your fingers in warm soapy water, then rinse thoroughly in clean warm water. Do not insert any objects into the One-Way Valve as this may damage the valve.



Special Cleaning Instruction for the Membrane Valve:

To clean the Membrane Valve, simply pull the Membrane from the Valve until it snaps slightly on the stem but does not completely detach. Clean the Membrane Valve in warm soapy water then rinse thoroughly in clean warm water or warm running water. After cleaning, push the stem back into place and make sure the Membrane lays flat against the Valve opening.

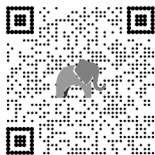


- Set the Tubing aside. Under normal working conditions of the pump, the Diaphragm prevents milk backflow, therefore, the Cap and Tubing do not need to be washed. If any liquid or liquid vapor is found inside the Tubing, follow the Tubing Cleaning Instructions carefully before use.
- The rest of the Expression Collection Combo Kit may be cleaned in the upper compartment of your dishwasher or hand-washed with dish soap in hot water. Make sure to place the small parts and accessories in the dishwasher basket with the lid closed to avoid any loss or damage.
- DO NOT use solvents or abrasives.
- Rinse with hot, clean water.
- To clean the Electric Pump Main Unit, wipe it with a damp cloth, using only water or water mixed with a mild soap.

Tubing Cleaning Instructions:

- Wipe the outside of the Tubing with a clean, damp cloth. Avoid getting water or other fluids inside the Tubing.
- If liquid is found inside the Tubing, rinse the Tubing with clean, hot water. Hang to AIR DRY COMPLETELY BEFORE USING. Do NOT insert any object into Tubing.

Drying Bag: For your convenience, you can use the included Drying Bag to hang dry all washed and sanitized accessories.

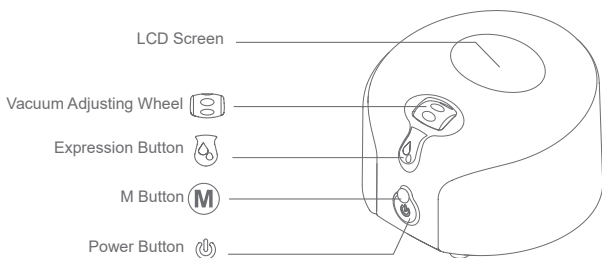


To view the cleaning instruction online, please visit Rumble Tuff online at <https://www.rumbletuff.com/troubleshooting> or scan this QR Code with your smartphone or tablet.

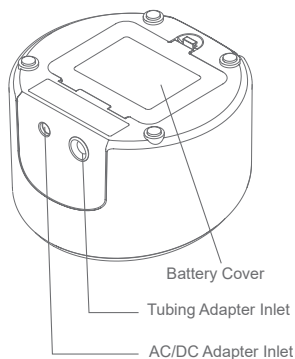
About Your Rumble Tuff Serene Express

Electric Breast Pump Main Unit

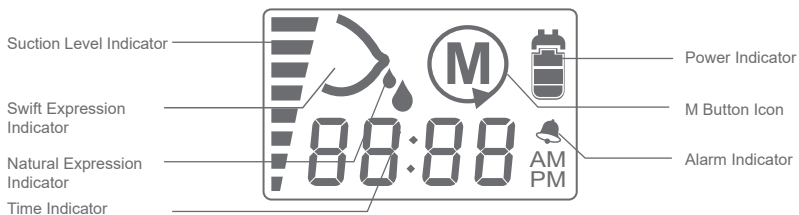
TOP VIEW



BOTTOM VIEW



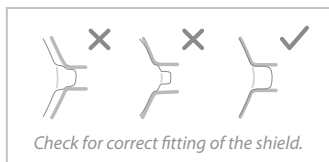
LCD Screen Guide



The Rumble Tuff® Serene Express Electric Breast Pump Duo is designed to express milk from lactating women. It is intended for multiple users if the collection kits are not shared.

About Your Rumble Tuff Serene Express

How to Use Your Rumble Tuff Serene Express




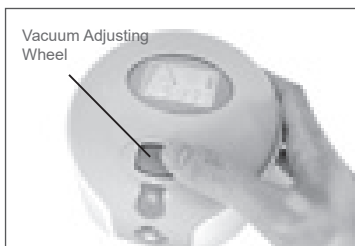
Hold the Expression Collection Combo Kit to your breast so that your nipple is centered in the Flange.




Press the Power Button  to begin pumping



The LCD Screen shows the time of your last pumping session for a few seconds. The pump will automatically start from the Reflex Expression for 15 seconds, then switch to the Swift Expression automatically. 

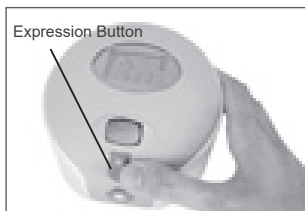





Adjust the suction in the Swift Expression to your comfort level while pumping by rolling the Vacuum Adjusting Wheel  up (+) or down (-).

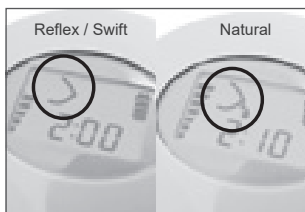




About Your Rumble Tuff Serene Express

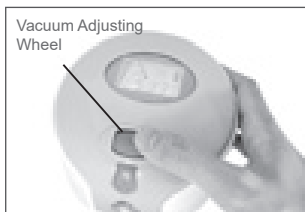
How to Use Your Rumble Tuff Serene Express




Depending on your preference and your baby's sucking habit, you can choose to express your milk in either the Swift Expression  or Natural Expression  settings. To switch from Swift Expression to Natural Expression, press the Expression Button  once.




To check which expression setting that you are on, check the LCD display for the Expression Cycle Icon. The breast shape icon  indicates that you are at Reflex / Swift Expression setting. The breast shape with milk drops icon  indicates that you are at Natural Expression setting.



Adjust the suction in the Natural Expression to the most comfortable and effective level while pumping by rolling the Vacuum Adjusting Wheel up  (+) or down (-).



When your pumping session is finished, turn the pump off by pressing the Power Button. 

About Your Rumble Tuff Serene Express

How to Use Your Rumble Tuff Serene Express



After the pump has been turned off, the LCD Screen will remain on for a few seconds. The display will show the total amount of pumping time, then automatically switch to Standby/Clock mode, or Alarm Clock Mode if the Alarm was turned on.

Note:

- Make sure there is no suction on the nipples before removing the Breastshield. If necessary, break the suction by inserting a finger between the Breastshield and the breast, similar to the way you break away from your baby's suction.
- If the Rumble Tuff® Electric Breast Pump Duo is left on, but unattended for more than 30 minutes, the Pump will automatically shut-off.



To view the Assembly Guide video, please visit Rumble Tuff online at www.rumbletuff.com/troubleshooting or scan this QR Code with your smartphone or tablet.

Suction Level

Whenever you select a Suction Level (in any Expression setting), your Rumble Tuff Electric Breast Pump Duo remembers it until you change it. This feature becomes useful after you are familiar with this pump. Your Rumble Tuff Electric Breast Pump Duo retains the memory of your previous pumping level without you having to reset your preferred level each time you pump.

To set your preferred suction level:



1. In Reflex / Swift Expression, adjust the suction level to the level you find most comfortable by rolling the Vacuum Adjusting Wheel (🌀) up (+) or down (-).
2. In Natural Expression, adjust the suction level to the highest effective, yet still comfortable level by rolling the Vacuum Adjusting Wheel (🌀) up (+) or down (-).

About Your Rumble Tuff Serene Express



M Button (My Favorite Pattern)

One of the great features of your Rumble Tuff Electric Breast Pump Duo is the M Button (My Favorite Pattern). You can easily set and recall your personal expression pattern by pressing the M Button. It is extremely helpful if you usually use Natural Expression setting to express your milk. You do not need to use the M Button if you usually use Swift Expression for your expression.

To set My Favorite Pattern:

1. After a few times of pumping, you will find that your let down time is about the same in every pumping session.
2. Start pumping as you normally do. Your pump starts at the Reflex Expression for 15 seconds, then automatically switches to the Swift Expression and goes straight to the vacuum level that you last used.
3. Press the Expression Button  when your milk starts to let down to switch to the Natural Expression pattern. Adjust the Vacuum Adjusting Knob to your desired suction level.
4. Press and hold the M Button  for three seconds, until the M icon flashes . That's it, your unique My Favorite Pattern is now set.
5. Continue to express your milk and finish your pumping session.








To recall the My Favorite Pattern:

1. Turn the Pump on. 
2. Press the M Button  (Do NOT hold more than 3 seconds).
3. Your pump automatically switches from Swift Expression to Natural Expression at the recorded let down time.

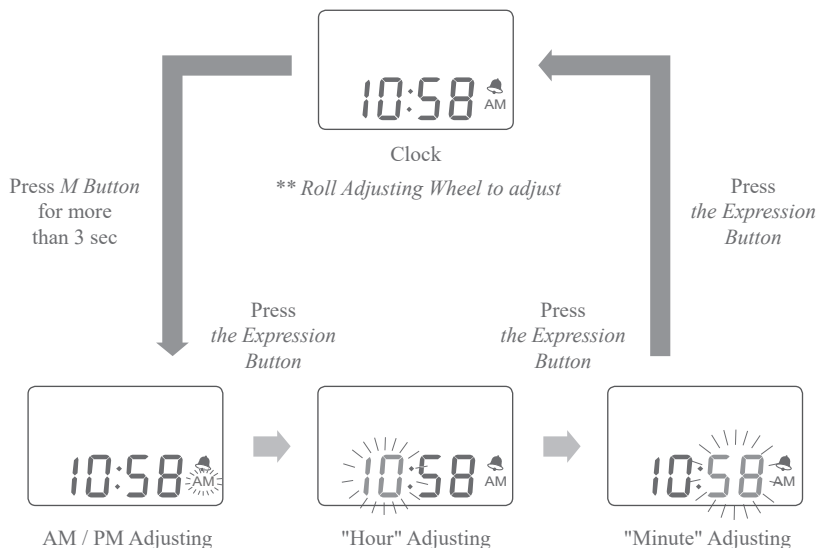
Note: You CANNOT adjust the suction level or switch between Swift Expression and Natural Expression while in My Favorite Pattern. If you have to adjust the suction level, press the M Button once to exit My Favorite Pattern first.

About Your Rumble Tuff Serene Express

How to Adjust the Clock

1. While in the Clock/Standby Mode, press and hold the M Button  for 3 seconds to go into Clock Setting mode. A beep will sound and the AM/PM icon will flash.
2. To change between AM/PM, turn the Vacuum Adjustment Wheel  up (+) or down (-).
3. Press the Expression Button  once to change from AM/PM to the hour. The hour number will flash.
4. To change the hour, turn the Vacuum Adjusting Wheel  clockwise to increase (+) or decrease (-) the hour.
5. Press the Expression Button  again to change the minutes. The minute number will flash.
6. To change the minutes, use the Vacuum Adjusting Wheel  to increase (+) or decrease (-) the minutes.
7. Press the Expression Button  one last time to save your settings.



Note: While in any Clock Setting mode, if no adjustments are made within 10 seconds, the setting will automatically save and the LCD Screen will return to Clock-Standby Mode. Please install and keep batteries in place to preserve the Clock and Alarm function.






About Your Rumble Tuff Serene Express

It is advised to pump regularly in order to maintain a good milk supply from your body. The Alarm Clock Mode is designed to remind you when it is time for your next pumping cycle. By keeping a regular expression pattern, your body maintains a good milk supply. After setting the time interval between each pumping session, the alarm countdown will automatically start after the previous pumping cycle has stopped. An alarm will sound when the pre-set time has passed.

How to Adjust the Alarm

1. In Clock/Standby Mode, press the M Button  once to go into the Alarm Adjusting Mode.
2. LCD screen will alternately display two sets of time: Alarm Interval time (which is the time between each pumping session) and Next Alarm Time. E.g. If the Power Off time of your last session is 10:58 AM and you want to do the next expression session after 2 hours and 30 minutes, then set the Alarm Interval Time as 2 hours and 30 minutes. The Next Alarm Time will be at 1: 28 PM.
3. Roll the Vacuum Adjustment Wheel  up (+) or down (-) to adjust the Alarm Interval Time. The adjustment increases (+) or decreases (-) in 15 minute increments. The Next Alarm Time will be adjusted automatically according to the last time the pump was used.

Note: *The Alarm Interval Time is the time from the end of the last session to the next alarm set off time. It is NOT the time from the beginning of one expression session to the beginning of the next one.*

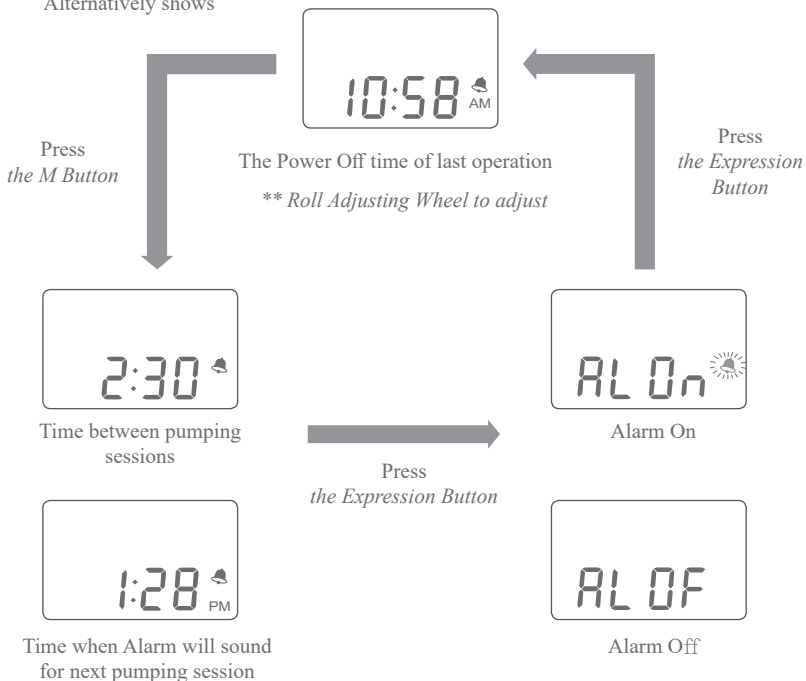
4. Press the Expression Button  to switch to the Alarm On/Off setting.
5. Roll the Vacuum Adjustment Wheel  up (+) or down (-) to turn the Alarm Function On/Off.
6. Press the Expression Button  again to save your setting.

Note: *While in the Alarm Adjusting Mode, if no adjustments are made within 10 seconds, the setting will automatically save and the LCD Screen will return to Clock/Standby Mode.*

About Your Rumble Tuff Serene Express

How to Adjust the Alarm (Continued)

Alternatively shows



Power Options

Your Electric Breast Pump may be operated under any of the following power supply modes:


Using your AC/DC Adapter (included)



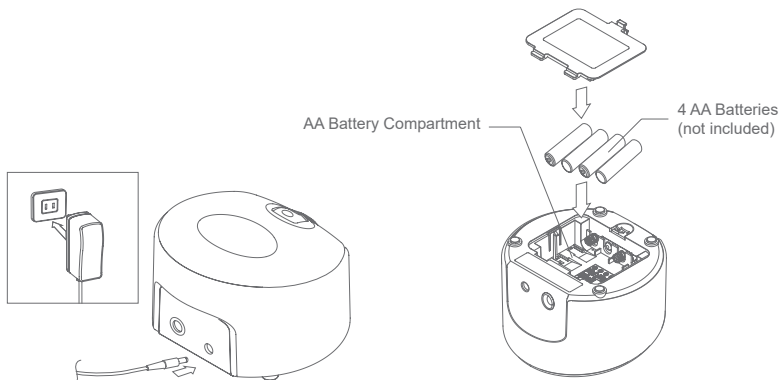
Plug the AC/DC Adapter into an electrical outlet.



Attach the power cord to the AC/DC Adapter Inlet on the Electric Pump Main Unit.

 **Caution:** Electrical safety can only be achieved when using the AC/DC Adapter provided with the Pump. Use of any another Adapter poses a safety risk and/or the warranty may be voided.

Using (4) AA Alkaline Batteries



- Always replace all (4) AA batteries at the same time.
- Remove all batteries from the Electric Pump Base if the Rumble Tuff Electric Breast Pump Duo is not going to be used for extended periods of time.
- Properly dispose of all batteries according to regulation for environmental protection and recycling.

Note: Alkaline Batteries may present a risk of fire or chemical burn if mistreated. DO NOT disassemble any battery. DO NOT place batteries near heat source or fire. Dispose of used batteries properly. DO NOT dispose of batteries in fire. Keep away from children.

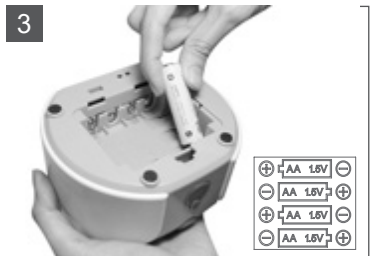
Install the Batteries:



Open the Battery Cover.



Remove the old batteries if you are replacing them and properly dispose of them.



Insert (4) new AA Alkaline Batteries. Do not mix old and new batteries.

Note: Make sure the polarity is correct as indicated.



Close the Battery Cover, making sure it "snaps" into place.

Breastmilk Storage Guidelines

Check with your healthcare provider or an International Board-Certified Lactation Consultant for specific storage instructions. This information is based on current research and applies to mothers who are storing their milk for home use with a healthy, full-term baby.

Important Notes:

- **STORAGE CONTAINERS:** The best option for storing human milk is glass or hard-sided plastic containers with well-fitting tops. When you are freezing your breastmilk, do not fill the container more than 3/4 full to allow for expansion from freezing. Store milk in the main refrigerator or freezer compartment, away from the door, to avoid changes in temperature that may compromise the milk.
- **RE-WARMING THE FROZEN MILK:** Frozen milk can be thawed in the refrigerator overnight or under cool running water. Gradually increase the temperature of the water to heat the milk to feeding temperature. Be sure to use thawed milk within 24 hours. Discard any leftovers.
- **RE-WARMING THE REFRIGERATED MILK:** Refrigerated milk can be warmed by running under warm water for several minutes. ALWAYS test the temperature of the milk on the inside of your wrist before feeding it to your baby. The milk should feel warm, not hot.
- **WHAT TO DO:** Storing milk in 2 to 4 oz amounts may reduce waste. Write the date you expressed your milk on the container (include your baby's name on the label if your baby is in a day-care setting). Use the oldest milk first. Throw away previously frozen milk that is not used within 24 hours.
- **WHAT NOT TO DO:** Do NOT heat milk directly on the stove. Do NOT thaw in hot or boiling water. Do NOT microwave milk, as microwaving alters the composition of the milk and may create hot spots that may burn your baby. Do NOT refreeze thawed milk.
- **NOTE:** Human milk may separate into a milk layer and a cream layer when it is stored. This is normal. Gently swirl to redistribute the cream before giving to baby. Sometimes thawed milk may smell or taste soapy. This is due to a breakdown in the milk fats. The milk is safe and most babies will still drink it.
- **STORAGE:** Expressed milk can be kept in a common refrigerator at the workplace or day care center. The US Center for Disease Control (CDC) and the US Occupational Safety and Health Administration (OSHA) agree that human milk is not among the body fluids that require special handling or storage in a separate container.

Breastmilk Storage Guidelines

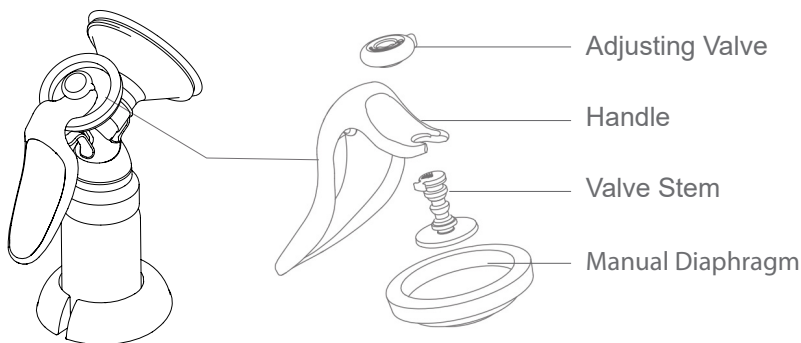
Place	Temperature	How long	Things to know
Refrigerator	39°F or colder	<ul style="list-style-type: none">• Up to 72 hours is best.• Up to 5-8 days is okay for very clean expressed milk.	Store milk in the back of the main body of the refrigerator.
Freezer	0°F or colder	<ul style="list-style-type: none">• Up to 6 months is best.• Up to 12 months is okay.	Store milk toward the back of the freezer where temperature is most constant. Milk stored at 0°F or colder is safe for longer durations, but the quality of the milk might not be as high.
Smaller cooler with a blue-ice pack.	59°F	24 hours	Keep ice packs in contact with milk containers at all times; limit opening cooler.
Countertop, table	Room temp (60°F - 85°F)	<ul style="list-style-type: none">• Up to 3-4 hours is best.• Up to 6-8 hours is okay for very clean expressed milk.	Containers should be covered and kept as cool as possible; covering the container with a clean cool towel may keep milk cooler. Throw out any leftover milk within 1 to 2 hours after the baby is finished feeding.

Do not freeze thawed milk. Discard any remaining thawed milk if not used within 24 hours.

Source: Breastfeeding Made Easier at Home and Work
www.womenshealth.gov

Rumble Tuff Manual Pump Assembly

How to Assemble the Manual Pump Diaphragm Kit



For the installation of the Membrane Valve and Silicone Cushion, please refer to Bottle Assembly on pages 7-15.



With the Cup in one hand, place the Manual Silicone Diaphragm in the Cup (matching the shape of the Cup).

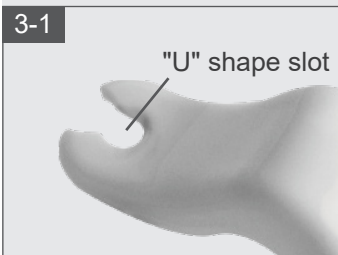


Press around the edges of the Diaphragm for a secure fit. Make sure the Diaphragm is evenly mounted on the Cup and there is no gap in between them.

Rumble Tuff Manual Pump Assembly

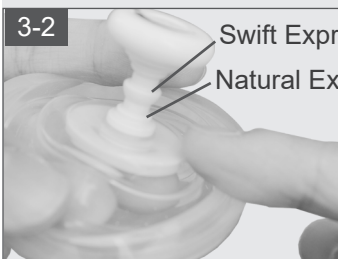
How to Assemble the Manual Pump Diaphragm Kit

3-1



Place the "U" shape slot of the Handle onto the recess of the Adjusting Valve Stem.

3-2

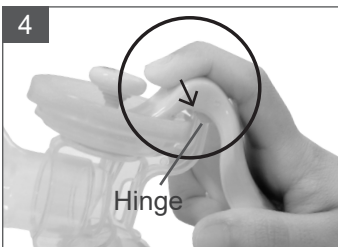


There are 2 recesses on the Adjusting Valve Stem. The upper recess replicates the Swift Expression setting, and the bottom recess replicates the Natural Expression setting.

3-3



4



Push the Handle down onto the hinge of the Cup until it "snaps" into place.

Using your Rumble Tuff Manual Pump

How to Use the Manual Pump

Note: There are two recesses for attaching the handle to the Manual Pump. You can toggle between these two settings by pushing the Adjusting Valve Stem away from the "U" shape tip of the Handle to dislocate the connection. Reattach the tip of the Handle using a different recess on the Adjusting Valve Stem.



Swift Expression Setting:

This setting is for fast, shallow suction. Often when a baby is hungry or has just "Latched-On," their nursing pattern is fast and shallow to start the mother's milk flow.

Natural Expression Setting:

This setting is for longer, deeper suction. When the mother's milk begins to flow into the baby's mouth, they often naturally change to a longer deeper suction pattern.

Note: You can use the Manual Pump in either Expression pattern. To achieve the best results, use an expression pattern or combination of expression patterns, that closely match your baby's sucking and swallowing habits.

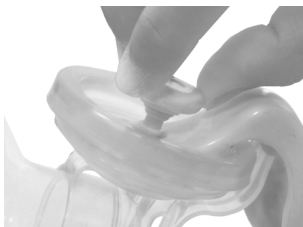
Using your Rumble Tuff Manual Pump

How to Use the Manual Pump

1



Hold the Manual Breast Pump to your breast so that your nipple is centered inside the Breastshield, then squeeze the handle toward the bottle to test the suction.



Note: If an adjustment is necessary, turn the round knob of the Adjusting Valve to a comfortable suction level.

2



Increase

Decrease

You can adjust the suction level by turning the round knob on the top of the Adjusting Valve Stem. Turn clockwise to increase the suction and counter-clockwise to decrease it.



Note: Do not over-turn the Adjusting Valve, as it will cause the Adjusting Valve to bulge and leak air, creating a suction problem. Make sure the gap opening on top of the Adjusting Valve is lined up properly on the top of the Valve Stem so the Adjusting Valve turns smoothly.

If necessary, re-adjust the Adjusting Valve by turning it back and forth a few times.

Interruption of Electrical Service

If you experience an interruption of electrical service, due to a power surge or other factors, during normal operation of your Rumble Tuff® Electric Breast Pump, try the following:

- Unplug the AC/DC Adapter from the electrical outlet and wait for 5 seconds.
- Plug the AC/DC Adapter back into the electrical outlet.
- If the problem persists, try a different electrical outlet.

Radio Frequency Energy

This equipment generates, uses, and can radiate radio frequency energy. If not installed properly and used in accordance with the instructions, it may cause harmful interference with other devices in the vicinity. Try the following steps if interference occurs:

- Reorient or relocate the device receiving interference.
- Increase the distance between the equipment.
- Connect the equipment to an outlet on a circuit different from that which the other device(s) are connected.
- Consult the manufacturer or a field service technician of the device receiving interference for help.
- Please understand that there is no guarantee that interference will not occur.

Decreased Suction

If one bottle has lost suction, the problem is not in the pump:

- Make sure the Expression Collection Combo Kit is assembled correctly (see pages 7-15).
- Center your nipple in the Flange and make sure there is a complete seal between the Flange and your skin.
- Press the Diaphragm firmly into the Cup and make sure there is no gap (see page 10).
- Check the One-Way Valve or Membrane Valve and make sure that it is properly sealed and securely seated (see page 8, 13).
- Inspect the Valve very closely for tears or warping. This component is critical to achieve proper suction; even the tiniest tear will adversely affect pump performance. If damaged, replace the Valve with one of the spare valves provided with your Rumble Tuff Serene Express.


If both bottles have lost suction:

- Detach the Tubing from the back of your Electric Breast Pump and place a finger over the Tubing Adapter Inlet.
- If you do feel suction, the Electric Pump is operating properly.
- If you do NOT feel suction or feel that suction has decreased to an unexpected strength, contact Rumble Tuff Customer Service.
- Check the Vacuum Tubing closely for tears.

No response while operating Adjusting Knob and Mode button

You CANNOT adjust the suction level or switch between Swift Expression and Natural Expression while in My Favorite Pattern. If you have to, stop My Favorite Pattern by pressing the M Button.

Pump doesn't run when power is "on"

If the Power Symbol flashes  or you see "Err" and hear 4 Beep, contact the local DME dealer/retailer you purchased the unit from.

Breast Milk Buildup in the Breastshield Body

If breast milk doesn't appear to be draining fast enough into the Collection Bottle, reduce the suction setting on your Electric Breast Pump to allow the milk to drain before gradually increasing the suction to the original setting.

Where to Get Replacement Parts

If you are missing a part or if a part was damaged, please contact Rumble Tuff Customer Service.

- Email: customerservice@rumbletuff.com
- Toll-Free: (855) 228-8388
- Website: www.rumbletuff.com

Where to Purchase Additional Accessories

Additional accessories and replacements parts are available for purchase for use with your Rumble Tuff® Serene Express.

- Email: sales@rumbletuff.com
- Fax: 801-796-2688
- Toll-Free: 855-228-8388
- Online Store: www.rumbletuff.com/store

Pumping Tips:

The most important and successful part of pumping is the letdown reflex. The letdown reflex is when your milk begins to flow freely.

- Try relaxing with a warm, wet compress on your breasts.
- Drink plenty of fluids.
- Avoid outside distractions.
- Visualize yourself happy, well-rested and successful at pumping.
- Sometimes a light circular massaging of the breast prior to and/or during a pumping session will help your letdown reflex start/continue.
- Go to a non-stressful environment.
- Use a comfortable chair that gives lower back support with or without a footstool. After all, you're the one who has to be comfortable.

Depending on your health and milk production condition, you may be able to achieve more than one letdown in one pumping session. Most mothers have more than one letdown while breastfeeding and don't even notice the change. To achieve multiple letdowns; which mimics the natural reflex found in breastfeeding, you can switch back and forth between the Swift Expression and Natural Expression just by pressing the Power/Mode Button.

Remember that successful pumping is a learned skill. Don't get discouraged, and keep working at it to obtain the best results. Breastmilk is produced on a supply-and-demand basis; expressing your breastmilk regularly stimulates and maintains your supply.

If it feels uncomfortable or painful on your breasts while using the pump, try decreasing the suction level by rolling the Vacuum Adjusting Wheel down (-). You may also try pumping with/without the Silicone Cushion. If these tips do not help, turn the product off and remove the pump from your breasts for a few minutes.



To learn more about troubleshooting your pump, please visit www.rumbletuff.com/troubleshooting or scan this QR Code with your smartphone or tablet.

Limited Consumer Product Warranty (United States)

This Rumble Tuff® Breeze Electric Breast Pump is warranted to the original consumer "the purchaser" to be free from defects in material and workmanship which are not commercially acceptable for 3 years from the date of purchase on the Rumble Tuff® Electric Breast Pump. Warranty coverage terminates if you sell or otherwise transfer this product to another person. This warranty gives you specific legal rights and you may also have other rights, which vary by location.

RUMBLE TUFF® MAKES NO EXPRESS WARRANTY OF ANY KIND REGARDING THIS PRODUCT OTHER THAN THOSE WARRANTIES SET FORTH HEREIN. ANY IMPLIED WARRANTY, INCLUDING ANY IMPLIED WARRANTY OF MERCHANTABILITY OR ANY IMPLIED WARRANTY OF FITNESS FOR A PARTICULAR PURPOSE TO THE EXTENT PERMITTED BY LAW, SHALL BE LIMITED IN DURATION TO A PERIOD OF 3 YEARS FROM THE DATE OF PURCHASE BY THE ORIGINAL PURCHASER.

In the event that this product is found by Rumble Tuff® to not meet the above limited warranty, as the purchaser's sole and exclusive remedy, Rumble Tuff® will repair, or, at the discretion of Rumble Tuff®, replace this product without charge for such replacement parts or labor. **The purchaser shall bear all expenses related to returning this product to Rumble Tuff®.** This warranty does not apply to any part of the product that has been subject to misuse, abuse, or alteration. Only Rumble Tuff® brand replacement parts are recommended for use with Rumble Tuff® breastfeeding products. Improper or incorrectly performed maintenance or repair, or use of non-Rumble Tuff® brand replacement parts voids this warranty.

TO THE EXTENT PERMITTED BY LAW, Rumble Tuff® SHALL NOT BE LIABLE FOR ANY INCIDENTAL OR CONSEQUENTIAL DAMAGES INCLUDING, BUT NOT LIMITED TO, REPLACEMENT COSTS RESULTING FROM THE BREACH OF ANY WRITTEN OR IMPLIED WARRANTY.

If you wish to make a claim under this warranty, you will need the following:

- The entire original Rumble Tuff® product
- The original receipt showing date of purchase
- Return Authorization Number (RA#) - Please contact Rumble Tuff® customer service by calling toll-free (855) 228-8388 for a RA#
- Detailed description of the problem

You, the purchaser, are responsible for all shipping charges.

Do NOT send product without a RA#.

To obtain an RA# and shipping address, please contact Rumble Tuff® Customer Service Department by:

- Toll-free: (855) 228-8388
- Email: customerservice@acutebaby.com
- In writing:

Customer Service Department
Rumble Tuff
865 N 1430 W
Orem UT 84057

Items returned without a RA# will not be processed and will be returned to sender (postage due).

Power Requirements:

AC/DC Adapter (included)

North American Plug Configuration:

100V~240V AC, 50/60 Hz, 0.4A, wall

- Brand: Acute Ideas
- Model: MLF-A00121201000U0075, 100V ~ 240V AC, 50/60 Hz, 0.4A max, wall plug type AC/DC Adapter with DC 12V/1A output.





Battery

- (4) AA Batteries; 1.5V Alkaline

Technical Specifications:

- Vacuum: Reflex / Swift Expression: -85~-185mmHg(-11.3~-24.6kpa)
Natural Expression: -110~-250mmHg(-14.6~-33.3kpa)
- Ambient Temperature range: +10°C to 40°C (50°F to 104°F)
- Relative Humidity range: 20% to 80%

Symbols Legend:

-  Type BF equipment (Breastshield)
-  Consult instructions for use
-  Disposal of Electrical and Electronic Equipment (WEEE)
-  Medical CE

Made in China



Rumble Tuff®

865 N 1430 W Orem UT 84057-6402
Tel: (801) 609-8168 Fax: (801) 796-2688
www.rumbletuff.com