



Rumble Tuff®

Whisper

USB Electric Breast Pump

Instructions & Assembly



Table of Contents

Important Safeguards	4
Danger	4
Caution	4
Warning	5
Accessories and Parts	6
Included Accessories	6
Expression Collection Combo Kit	7
About Your Whisper	8
Electric Breast Pump Main Unit	8
Expression Indicator Lights	8
Bottle Assembly	9
How to Assemble the Expression Collection Combo Kit	9
Power Options	14
Using your AC/DC Adapter	14
Using your Power Bank	15
Getting Started	16
How to Use Your Whisper Electric Breast Pump	16
LED Light Sign Guide	18
Silent/Sound Mode	18
Cleaning Instructions	19
Sanitize Prior to First Use	19
Before Each Use	19
General Cleaning Instructions	19
Tubing Cleaning Instructions	20

Troubleshooting	21
Interruption of Electrical Service	21
Radio Frequency Energy	21
Decreased Suction	21
Pump Doesn't Start	22
Breast Milk Buildup In the Breastshield Body	22
Where to Get Replacement Parts	22
Where to Purchase Additional Accessories	22
Technical Data	24
Power Requirements	24
Technical Specifications	24
Symbols Legend	24
Warranty	25

Important Safeguards

The Rumble Tuff® Electric Breast Pump is designed for a single user and should never be shared or resold; doing so will void the warranty.

READ ALL INSTRUCTIONS BEFORE USING

DANGER:

To reduce the risk of electrocution:

- Always unplug this product immediately after using.
- Do not use while bathing.
- Do not place or store this product where it can fall or be pulled into a tub or sink.
- Do not place or drop into water or other liquid.
- Do not reach for an electrical product that has fallen into water. Unplug immediately.
- Do not allow children or pets to play with the product (both motor unit and accessories), as small parts and components included may pose a swallowing, choking or strangulation hazard.

CAUTION:

- Do not use this product for any other purpose than as indicated in this manual.
- Make sure all of the parts are assembled correctly before operating.
- Stop using the breast pump immediately if your breasts or nipples experience pain or discomfort.
- Please wash hands before using this product.
- Keep this product out of reach of babies and children.
- Do not drop or hit the product. Doing so may cause damage not covered by the warranty.
- Do not touch the product with bare hands right after sterilizing by boiling water to avoid scalds and burns.
- Do not over-boil to avoid premature aging of the product materials.
- Do not use any accessories, parts, or attachments that are not recommended by Rumble Tuff. Doing so may void the warranty.
- Do not connect the pump or any of its accessories to any equipment not recommended by Rumble Tuff.
- Do not store the product in a dusty, moist environment, neither being exposed to light.

WARNING:

To reduce the risk of burns, electrocution, fire, or injury to persons:

- This product should never be left unattended while plugged in.
- Close supervision is necessary when this product is used near children or invalids.
- Use this product only for its intended use as described in this manual. Do not use attachments not recommended by Rumble Tuff.
- Do not operate this product if it has a damaged cord or plug, if it is not working properly, if it has been dropped or damaged, or if it has been dropped in water.
- Keep the cord away from heated surfaces.
- Do not use while sleeping or drowsy.
- Do not drop or insert any other object into any opening or tubing.
- Do not operate outdoors with the AC/DC Adapter, where aerosol spray products are being used, or where oxygen is being administered.
- Make sure the voltage of the AC/DC Adapter is compatible with the power source.
- Plug the AC/DC Adapter into the electrical outlet first, then plug the Power Cord into your Rumble Tuff® Electric Breast Pump.
- Rumble Tuff has provided an AC/DC Adapter with this device. Use of an any AC/DC Adapter not approved by the manufacturer will void the warranty.
- If you are infected with Hepatitis A, Hepatitis B, or have HIV (Human Immunodeficiency Virus), pumping breast milk does not reduce or remove the risk of transmitting the virus to your baby through breast milk.
- Wash the Expression Collection Combo Kit parts before each use.
- Do not operate a motor vehicle while using the Rumble Tuff® Electric Breast Pump.
- Do not attempt to modify the product.

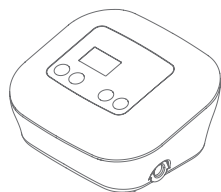
Note:

When disposing of the pump or its accessories, please consult with your local authorities for the proper method of disposal of potentially biohazardous parts and accessories, or to learn if there are any other regulations.

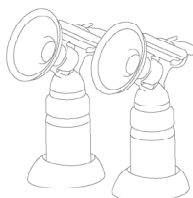
SAVE THESE INSTRUCTIONS
along with your receipt for future reference.

Accessories and Parts

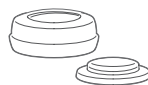
Included Accessories (For Double Pump)



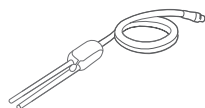
Breast Pump Main Unit



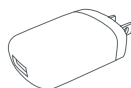
Expression Collection
Combo Kits (2 Sets)



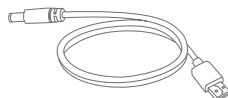
Bottle Adapter Kits
(2 Sets)



Vacuum Tubing (Double)
with Splitter

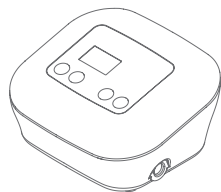


AC/DC Adapter

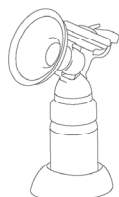


2 USB Cables
(45 cm & 190 cm)

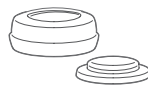
Included Accessories (For Single Pump)



Breast Pump Main Unit



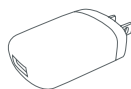
Expression Collection
Combo Kits (1 Sets)



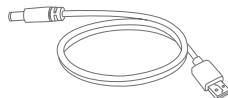
Bottle Adapter Kits
(1 Sets)



Vacuum Tubing (Single)



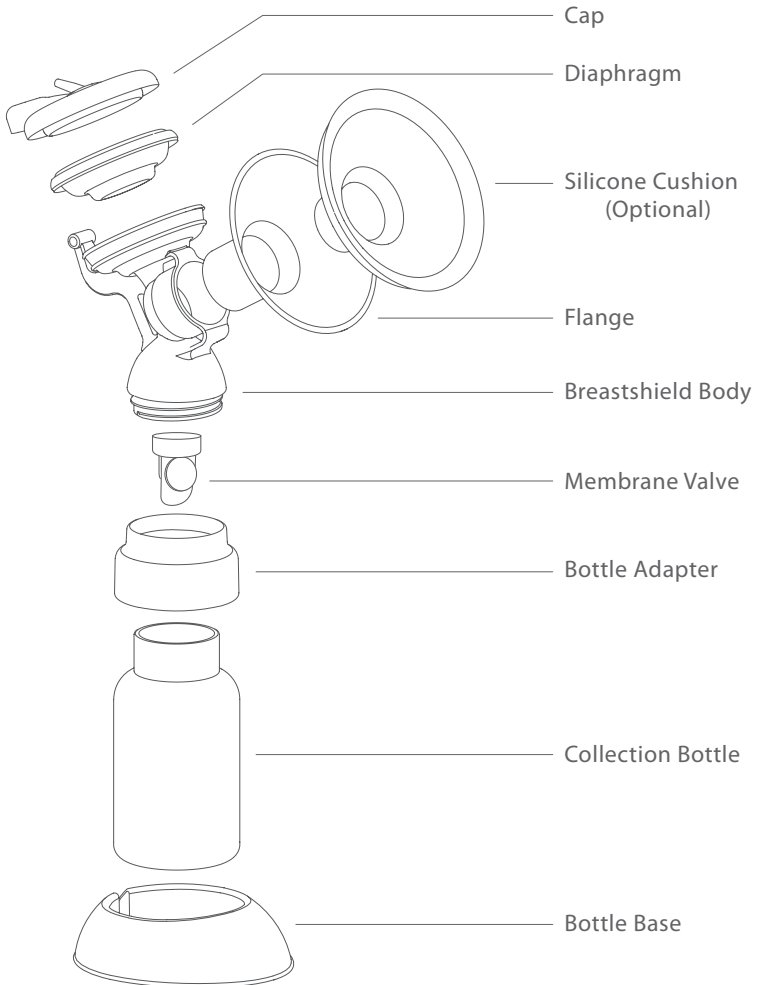
AC/DC Adapter



2 USB Cables
(45 cm & 190 cm)

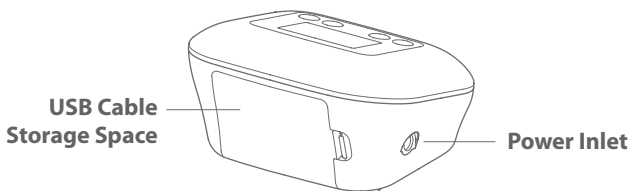
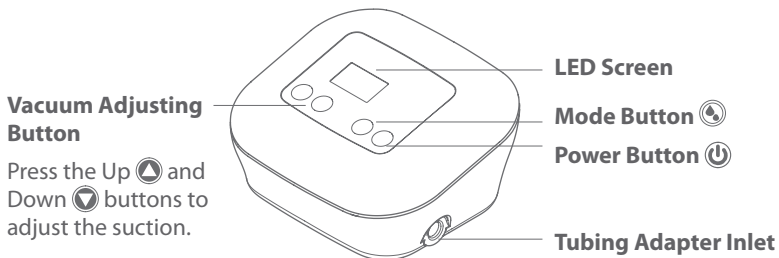
** Included accessories may vary by country and may change without notice.*

Expression Collection Combo Kit



About Your Whisper

Electric Breast Pump Main Unit



Expression Indicator Lights



Swift Expression (Single Digit Display)

- Helps stimulate milk flow and letdown.
- This is a fast, shallow suction pattern. When a baby has just latched on, the nursing pattern is fast and shallow to start the mother's milk flow.



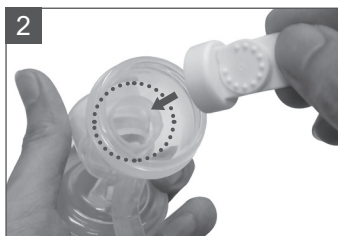
Natural Express - (Letter "F" before the single digit)

- Helps maximize milk expression.
- Longer and deeper suction pattern. When letdown begins (milk begins to flow), the baby often changes to a longer, deeper suction pattern.

How to Assemble the Expression Collection Combo Kit



Hold the Breastshield Body in one hand and make sure the bottle-thread side opening is facing up.



Insert the Membrane Valve onto the bottom of the Breastshield Body.

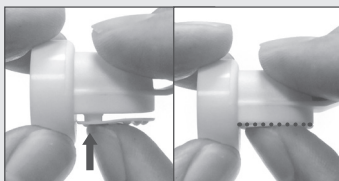


Verify that the membrane of the Membrane Valve is flat. A curled membrane will cause suction loss.

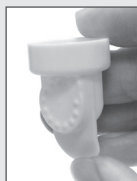
How to Assemble the Membrane Valve:



Hold the Silicone Membrane and insert the small stem into the top-right opening of the Valve.



Press hard on the Membrane to ensure that the stem is completely inserted and snugs against the Valve opening.



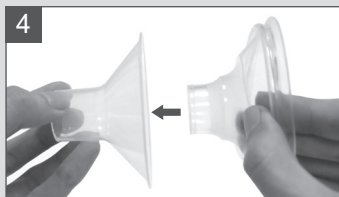
Membrane Valve Assembly completed.



Confirm that the Membrane Valve is securely installed.

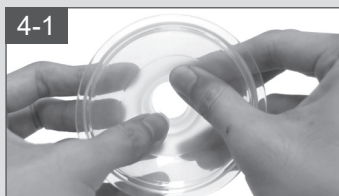
How to Assemble the Expression Collection Combo Kit

Optional



If desired, place the Silicone Cushion into the Flange of the Breastshield.

Note: Your Electric Breast Pump will work with or without the Silicone Cushion. Your comfort depends on your preference.



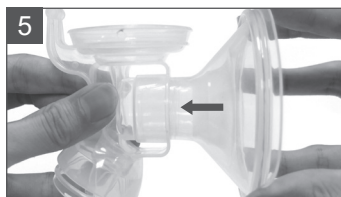
Push the center of Silicone Cushion into the Flange.



Secure the lip of the Cushion around the edge of the Flange.



Ensure that the lip of the Cushion is securely in place.



Insert the Flange into the Breastshield Body.

How to Assemble the Expression Collection Combo Kit

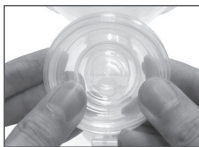
6



Place the Diaphragm in the Cup of the Breastshield Body.



Note: Do not reverse the order of steps 6 through 9. Doing so will cause suction loss when pumping.



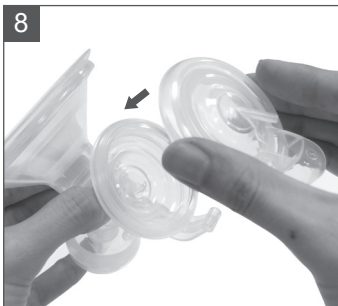
Press around the edges of the Diaphragm for a secure fit.

7



Ensure that the Diaphragm is securely mounted in place. This is crucial to achieving proper suction and preventing the backflow of milk.

8



Place the Cap on the Cup and Diaphragm.



Align the hinge cover over the hinge. Press tightly on the cap to seal.

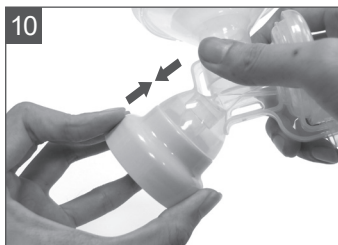
9



The Electric Diaphragm Kit is assembled.

Bottle Assembly

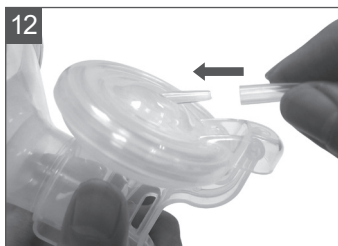
How to Assemble the Expression Collection Combo Kit



Twist the Bottle Adapter onto the Breastshield Body.



Twist on the Collection Bottle for a secure fit.



Connect the Tubing to the Tubing Connector located on the Cap.

Note: Make sure that there is no moisture in the Tubing.



Push together firmly for a tight seal.

How to Assemble the Expression Collection Combo Kit

14



The Expression Collection Combo Kit is assembled.

15

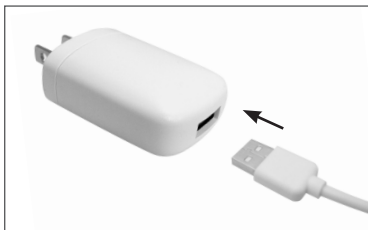


Make sure the Tubing Adapter is properly inserted into the Tubing Adapter Inlet on the Electric Pump Main Unit.

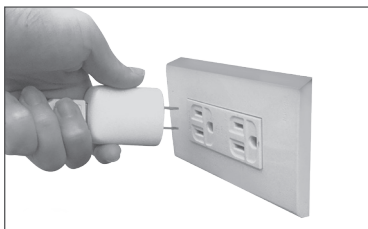
Power Options

Your Electric Breast Pump may be operated under any of the following power supply modes:

Using your AC/DC Adapter (included)



Connect the USB cable with the Adapter.



Plug the AC/DC Adapter into an electrical outlet.

Note: Do not leave only the AC/DC Adapter with or without USB cable on the electrical outlet after use.



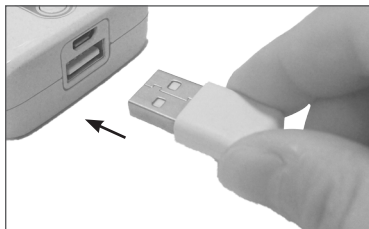
Attach the Power Cord to the Power Inlet on the Electric Pump Main Unit.



Caution:

Electrical safety can only be achieved when using the AC/DC Adapter provided with the Pump. Use of any another Adapter causes concern for the safety of the product and/or the user and voids the warranty.

Using your Power Bank

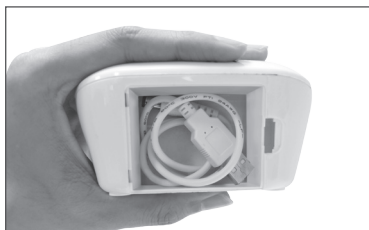


Connect the USB cable to the Power Bank.



Attach the Power Cord to the Power Inlet on the Electric Pump Main Unit.

Turn on your Power Bank for power supply.



Store the USB Cable in the storage compartment after use.

Note: Keep the storage compartment lid closed while pumping to reduce noise.

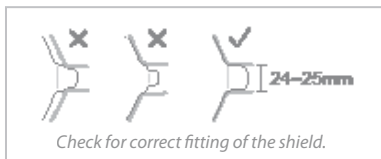


Caution:

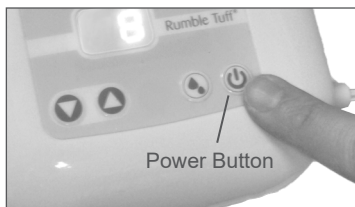
Contact your PC or laptop manufacturer before connection. Rumble Tuff is NOT responsible for PC or laptop connection problems.

Getting Started

How to Use Your Whisper Electric Breast Pump

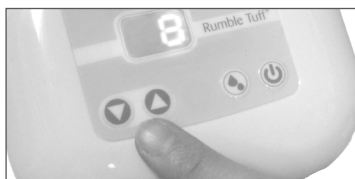




Hold the Expression Collection Combo Kit to your breast so that your nipple is centered in the Flange.

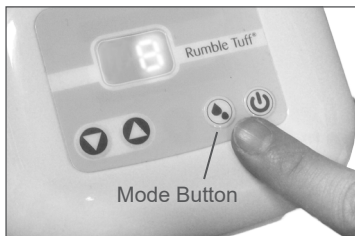



Press the Power Button  to begin pumping.

The last operating time will be displayed when the pump is turned on. The pump will automatically memorize the last suction level when the expression mode is being changed or when the pump is being turned off. It will start at the Swift Expression mode at the last used suction level.

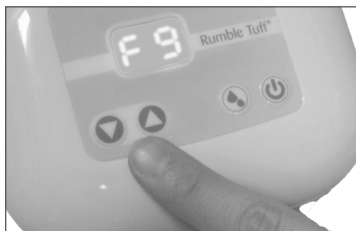


While pumping, use the Vacuum Adjusting Buttons  and  to adjust the suction level.

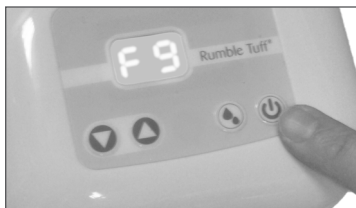


If you feel your milk start to letdown, press the Mode Button  once to switch to the Natural Expression mode. The pump will memorize the last suction level at each expression mode. When toggle between the expression modes, it will automatically switch back to that level.

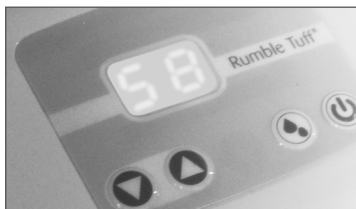
How to Use Your Whisper Electric Breast Pump (Continued)



Adjust the suction in the Natural Expression mode to your comfort level while pumping by pressing the Vacuum Adjusting buttons ▲ or ▼.



When you finish your pumping session, press the Power Button to turn the pump off. ⏻



After the pump has been turned off, the LED Display will remain lit to show the total minutes used in the last pumping session.

Note:

Make sure there is no suction applies to the nipples before removing the Breastshield. If necessary, break the suction by inserting a finger between the Breastshield and the breast, similar to the way you break away from your baby's suction.

If the Rumble Tuff® Electric Breast Pump is left on but unattended for more than 30 minutes, it will automatically shut off.



To view the Assembly Guide video, please visit Rumble Tuff online at www.rumbletuff.com/troubleshooting or scan this QR Code with your smartphone or tablet.


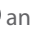
LED Light Sign Guide





While Pump is On	
LED Display	State
<p>80 82 83 84 85 86 87 88 Soft Expression LED (1 - 8)</p>	Pumping in Swift Expression
<p>F0 F2 F3 F4 F5 F6 F7 F8 F9 Natural Expression LED (F1 - F9)</p>	Pumping in Natural Expression
<p>88 [SL] Steady lit symbol "SL"</p>	Sound is Muted
<p>88 [M] Steady lit symbol "88"</p>	Sound is On

Silent/Sound Mode

The Silent/Sound Mode can only be changed while in the OFF state.

To change to Silent Mode, press both the  and the  buttons at the same time for 3 seconds. The LED Display (with "SL" displayed) will flash three times. When the device is on Silent Mode, all sounds are turned off.

To change to Sound Mode, press both the  and the  buttons at the same time for 3 seconds. The LED Display (with "88" displayed) will flash three times. When the device is on Sound Mode, all default sounds are turned on.

Sanitize Prior to First Use:

Before you use your Rumble Tuff® Electric Breast Pump for the first time, disassemble and boil all parts of the Expression Collection Combo Kit in water for 10 minutes.

- Be sure to use enough water to keep all parts afloat while boiling.
- **Do NOT boil Tubing or Tubing Adapter.**
- Remove all parts from the water immediately after sterilizing. To avoid scalds and burns, do NOT touch the product with bare hands right after sterilizing.
- Completely air-dry or towel-dry the parts before reassembling.

Partially dry components may affect the performance of your Electric Breast Pump. Please ensure that all parts are completely dry before use.

Before Each Use:

- Wash your hands thoroughly with soap and warm water before handling the Expression Collection Combo Kit, the Electric Breast Pump, or any Expression Collection parts or attachments.
- Make sure all parts are clean and dry.
- Ensure the Tubing is free from any liquid. **Do NOT operate your Rumble Tuff® Electric Breast Pump if any liquid is visible in the Tubing.**

General Cleaning Instructions:



Caution: Please use extra caution when cleaning the Membrane Valve. If it gets damaged, your breast pump will not function properly.

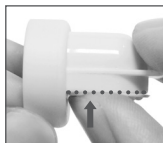
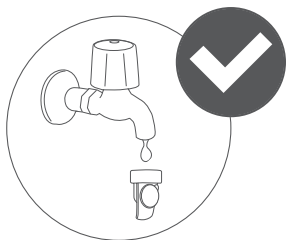


Special Cleaning Instruction for the Membrane Valve:

The Membrane is specially designed with a node on the stem for your convenience while cleaning.

To clean the Membrane Valve, simply pull away the Membrane from the Valve until it snaps slightly on the stem but does not completely detach from it.

Clean the Membrane Valve in warm, soapy water, then rinse thoroughly in clean, warm water or warm running water. After cleaning, push the stem back into place and make sure the Membrane lays flat against the Valve opening.



Cleaning Instructions

- Set aside the Tubing. Under the normal working conditions of the pump, the Diaphragm prevents the backflow of milk. Therefore, the Cap and Tubing do not need to be washed. If any liquid or liquid vapor is found inside the Tubing, follow the Tubing Cleaning Instructions carefully before use.
- The rest of the Expression Collection Combo Kit may be cleaned in the upper compartment of your dishwasher or hand-washed with dish soap in hot water. Make sure to place the small parts and accessories in the dishwasher basket with the lid close when cleaning small parts and accessories to avoid any lost or damage.
- Do NOT use solvents or abrasives.
- Rinse with hot, clean water.
- To clean the Electric Pump Main Unit, wipe it with a damp cloth, using only water or water mixed with a mild soap.

Tubing Cleaning Instructions:

- Wipe the outside of the Tubing with a clean, damp cloth. Avoid getting water or other fluids inside the Tubing.
- If liquids are found inside Tubing, rinse the Tubing with clean, hot water. Hang to AIR DRY COMPLETELY BEFORE USING. Do NOT insert any object into Tubing.

Note:

Before each use, visually inspect each individual component for cracks, chips, tears, discoloration, or deterioration, as they may affect the efficiency of the Rumble Tuff® Electric Breast Pump. In the event that damage to the device is observed, please discontinue use until the parts have been replaced.



To view the cleaning page, please visit Rumble Tuff online at www.rumbletuff.com/troubleshooting or scan this QR Code with your smartphone or tablet.

Interruption of Electrical Service

If you experience an interruption of electrical service, due to a power surge or other factors, during normal operation of your Rumble Tuff® Electric Breast Pump, try the following:

- Unplug the AC/DC Adapter from the electrical outlet and wait for 5 seconds.
- Plug the AC/DC Adapter back into the electrical outlet.
- If the problem persists, try a different electrical outlet.

Radio Frequency Energy

This equipment generates, uses, and can radiate radio frequency energy. If not installed properly and used in accordance with the instructions, it may cause harmful interference with other devices in the vicinity. Try the following steps if interference occur:

- Reorient or relocate the device receiving interference.
- Increase the distance between the equipment.
- Connect the equipment to an outlet on a different circuit from that which the other device(s) are connected.
- Consult the manufacturer or a field service technician of the device receiving interference for help.
- Please understand that there is no guarantee that interference will not occur.

Decreased Suction

If one bottle has lost suction, the problem is not in the pump:

- Make sure the Expression Collection Combo Kit is assembled correctly (see pages 9 – 13).
- Center your nipple in the Flange and ensure that there is a complete seal between the Flange and your skin.
- Press the Diaphragm firmly into the Cup and make sure that there is no gap (see page 11).
- Check the Membrane Valve and be sure that it is properly sealed and securely seated (see page 9).
- Inspect the Membrane and Valve very closely for tears or warping. This component is critical to achieve proper suction; even the tiniest tear will adversely affect pump performance. If damaged, replace the Membrane Valve with one of the spare valves provided with your Whisper Electric Breast Pump.

If both bottles have lost suction:

- Detach the Tubing from the back of your Electric Breast Pump and place a finger over the Tubing Adapter Inlet.
- If you do feel suction, the Electric Pump is operating properly.
- If you do NOT feel suction or feel that suction has decreased to an unexpected strength, contact Rumble Tuff Customer Service.
- Check the Vacuum Tubing closely.

Pump Doesn't Start

- Make sure the AC/DC Adapter is properly plugged in.
- Ensure the USB cable is well connected.
- If the Pump still doesn't work, contact Rumble Tuff Customer Service for assistance (see Page 22).

Breast Milk Buildup in the Breastshield Body

If breast milk doesn't appear to be draining fast enough into the Collection Bottle, reduce the suction setting on your Electric Breast Pump to allow the milk to drain before increase the suction setting gradually.

Where to Get Replacement Parts

If you are missing a part or if a part was damaged, please contact Rumble Tuff Customer Service.

- Email: customerservice@rumbletuff.com
- Toll-Free: (855) 228-8388
- Website: www.rumbletuff.com

Where to Purchase Additional Accessories


Additional accessories and replacements parts are available for purchase for use with your Electric Breast Pump.

- Email: sales@rumbletuff.com
- Fax: 801-796-2688
- Toll-Free: 855-228-8388
- Online Store: www.rumbletuff.com/store



To learn more about troubleshooting your pump, please visit www.rumbletuff.com/troubleshooting or scan this QR Code with your smartphone or tablet.

Tips:

- If it feels uncomfortable or painful on your breasts while using the Pump, try decreasing the suction level by pressing the Vacuum Adjusting Button down .
- Your satisfaction is our highest priority. Please contact us if you experience any discomfort while using our pump.
- You may also try pumping with/without the Silicone Cushion.
- If these tips do not help, turn the pump off and remove the Collection Bottles from your breasts for a few minutes. If you are still experiencing pain or discomfort, consult your healthcare professional or an international board certified lactation consultant.



Position the device to ensure easy disconnection of the power cord from the supply mains.




Power Requirements:

- AC/DC Adapter (included) North American Plug Configuration:
Brand: Acute Ideas
Manufacturer: GangQi Electronic Co., Ltd.
Model: GQ05-050100, 100V~240V AC, 50/60 Hz, 0.3A, Max
plug type AC/DC Adapter with DC 5V/1.0A output.

Technical Specifications:

- VACUUM:
Swift Expression: -9~-24kpa (-68~-180mmHg)
Natural Expression: -13~-35kpa (-98~-263mmHg)
- Ambient Temperature range: +10°C to 40°C (50°F to 104°F)
- Relative Humidity range: 20% to 80%
- IP: 21, Splash, Water Resistant rated IP21 under IEC standard 60529.
- Transportation / Storage Environment : -10 to 50°C / 20 to 90% relative humidity

Symbols Legend:

-  Type BF equipment
(Breastshield)
-  Consult instructions for use
-  Disposal of Electrical and
Electronic Equipment (WEEE)

Made in China

Limited Consumer Product Warranty (United States)

This Rumble Tuff® Electric Breast Pump is warranted to the original consumer, the purchaser, to be free from defects in material and workmanship which are not commercially acceptable for a period of 120 days from the date of purchase and an extended ONE year warranty on the pump motor. This warranty applies to the original owner only. Warranty coverage terminates if you sell or otherwise transfer this product to another person. This warranty gives you specific legal rights and you may also have other rights, which vary by location.

RUMBLE TUFF MAKES NO EXPRESS WARRANTY OF ANY KIND REGARDING THIS PRODUCT OTHER THAN THOSE WARRANTIES SET FORTH HEREIN. ANY IMPLIED WARRANTY, INCLUDING ANY IMPLIED WARRANTY OF MERCHANTABILITY OR ANY IMPLIED WARRANTY OF FITNESS FOR A PARTICULAR PURPOSE TO THE EXTENT PERMITTED BY LAW, SHALL BE LIMITED IN DURATION TO A PERIOD OF 120 DAYS FROM THE DATE OF PURCHASE BY THE ORIGINAL PURCHASER.

In the event that this product is found by Rumble Tuff to not meet the above limited warranty standard, as the purchaser's sole and exclusive remedy, Rumble Tuff will repair, or, at the discretion of Rumble Tuff, replace this product without charge for such replacement parts or labor. **The purchaser shall bear all expenses related to returning this product to Rumble Tuff.** This warranty does not apply to any part of the product that has been subject to misuse, abuse, or alteration. Only Rumble Tuff brand replacement parts are recommended for use with Rumble Tuff breastfeeding products. Improper or incorrectly performed maintenance or repair, or use of non-Rumble Tuff brand replacement parts voids this warranty.

TO THE EXTENT PERMITTED BY LAW, RUMBLE TUFF SHALL NOT BE LIABLE FOR ANY INCIDENTAL OR CONSEQUENTIAL DAMAGES INCLUDING, BUT NOT LIMITED TO, REPLACEMENT COSTS RESULTING FROM THE BREACH OF ANY WRITTEN OR IMPLIED WARRANTY.

If you wish to make a claim under this warranty, you will need the following:

- The entire original Rumble Tuff product
- The original receipt showing date of purchase
- Return Authorization Number (RA# or RMA#)
- Detailed description of the problem

You, the purchaser, are responsible for all shipping charges.

Do NOT send product without an RA#.

To obtain an RA# and shipping address, please contact Rumble Tuff Customer Service by:

- Toll-free: (855) 228-8388
- Email: customerservice@rumbletuff.com
- In writing:

Customer Service Department
Rumble Tuff
865 N 1430 W
Orem UT 84057

Items returned without an RA# will not be processed and will be returned to sender (postage due).



Rumble Tuff®

865 N 1430 W Orem UT 84057-6402
Tel: (801) 609-8168 Fax: (801) 796-2688
www.rumbletuff.com