

BOTTLE ASSEMBLY

EXPRESSION COLLECTION COMBO KIT (HF)

How to Assemble the Membrane Valve:



Hold the Silicone Membrane and insert the small stem into the top-right opening of the Valve.



Press hard on the Membrane to ensure that the stem is completely inserted and is snug against the Valve opening.



Membrane Valve assembly is complete.

Note: Verify that the membrane is flat. A curled membrane will result in suction loss.



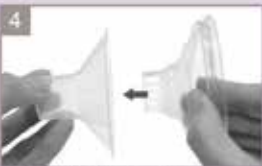
Hold the Breastshield Body in one hand and make sure the bottle-thread side opening is facing up.



Insert the Membrane Valve into the bottom of the Breastshield Body.



Confirm that the Membrane Valve is completely installed.



If desired, place the Silicone Cushion into the Flange of the Breastshield.



Push the center of the Silicone Cushion into the Flange.



Secure the tip of the Cushion around the edge of the Flange.



Ensure that the tip of the Cushion is securely in place.

Note: Your Electric Breast Pump will work with or without the Silicone Cushion. Your comfort depends on your preference.



Insert the Flange into the Breastshield Body.



Place the Diaphragm in the Cup of the Breastshield Body.

Note: Do not reverse the order of steps 6-9. Doing so will result in suction loss.



Ensure that the Diaphragm is securely in place in order to achieve proper suction.



Place the Cap on the Cup and Diaphragm.

Note: Align the hinge cover over the hinge. Press tightly on the cap to seal.



The Electric Diaphragm Kit is assembled.



Twist the Bottle Adapter onto the Breastshield Body.



Twist on the Collection Bottle for a secure fit.



Connect the Tubing to the Tubing connector loaded on the Cap.

Note: Make sure there is not moisture in the Tubing.



Push firmly together for a tight seal.



The Expression Collection Combo Kit is assembled.

瓶組組裝說明

集乳瓶組(25mm)

單向閥組裝說明:



將白色薄膜片的小柄插入左上角的孔洞裡



將白色薄膜片的小柄完全緊密插入單向閥裡



單向閥組裝完成

注意: 確保白色薄膜片保持平整, 若白色薄膜片不平整將會使磁力減弱



1 手持喇叭罩接頭, 確定接頭牙紋朝上



2 將單向閥組的白色薄膜片朝向您, 將單向閥組牢固地插入喇叭罩接頭內並確認單向閥組位置如下圖綠色打勾符號所示



3 確認單向閥組裝牢固



確認單向閥組插入方向如下方圖所示來維持吸乳器運作



4 將電動薄膜裝在杯體上方



按壓電動薄膜邊緣, 確保有組裝密合



4-1 請確保電動薄膜組裝有完全密合, 這將是影響吸力和防止乳汁迴流的關鍵



4-2 將杯體蓋蓋在電動薄膜上



確認電動薄膜的中心點和杯體的中心點成一直線並緊壓密合



4-3 這樣電動薄膜就組裝完成了



5 將奶瓶連接環轉入喇叭罩接頭



6 將奶瓶轉入奶瓶連接環中, 並確認有轉緊



7 將套管插入杯體蓋上方的連接口



8 確認套管有緊密接合

注意: 請確認套管內, 必須完全乾燥狀態



9 這樣集乳瓶組就組裝完成了

